

Grouping animals

Grouping animals can allow us to see animals with similar characteristics.

Different animals can fit into the same category.

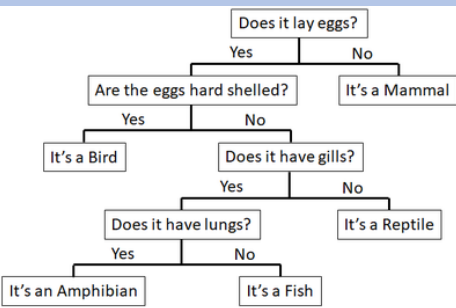
The main categories for animals to be defined in are birds, fish, amphibians, reptiles and mammals.

There are some exceptions to these groupings. For example, dolphins swim in water, but they are mammals. The same for platypuses as they are also mammals.

Classification key of animals

Classification keys allow us to put animals into different categories when they have the same characteristics.

We can use these keys to understand how different animals are similar to each other.

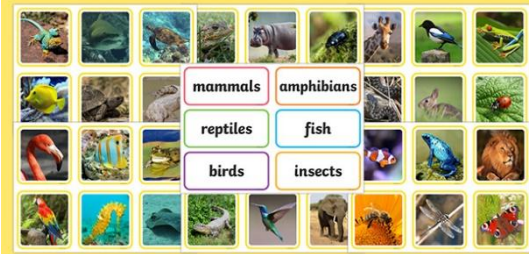


Vocabulary

- **mammal** – an animal with a spine, fur or hair on its body, and feeds its young on milk
- **bird** – an animal with a spine, feathers, wings and a beak
- **fish** – an animal with a spine, fins and gills, that lives in water
- **amphibian** – an animal with a spine that can live on land and in water
- **reptile** – an animal with a spine and dry scales on its body
- **vertebrate** – an animal with a spine

Science Autumn 1

Grouping and classifying living things



Grouping plants

By grouping plants, we can understand how some are different from others.

Deciduous – trees that lose their leaves in winter

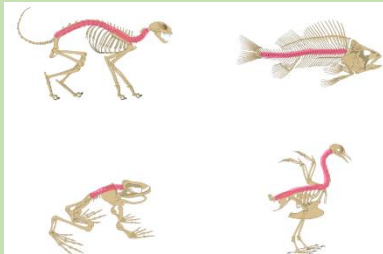
Evergreen – trees that keep their leaves all year round

Flowering plants can include plants that also create fruit. These would not be grouped with non-flowering plants that only produce leaves.

Vertebrates and invertebrates

We can easily tell if an animal is a vertebrate or an invertebrate based on whether the animal has a spine.

Not all animals have straight spines:



Classification key of plants

Classification keys of plants allow us to categorise plants into sections where they have the same characteristics.

